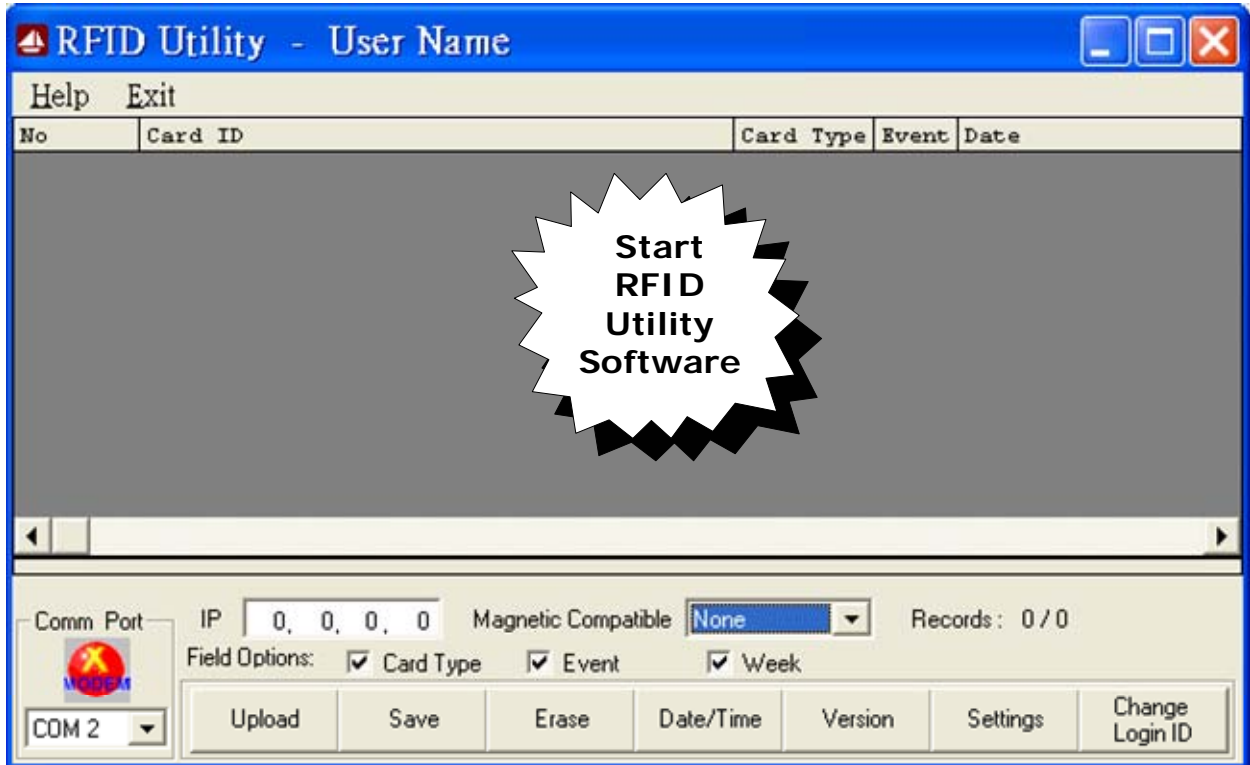
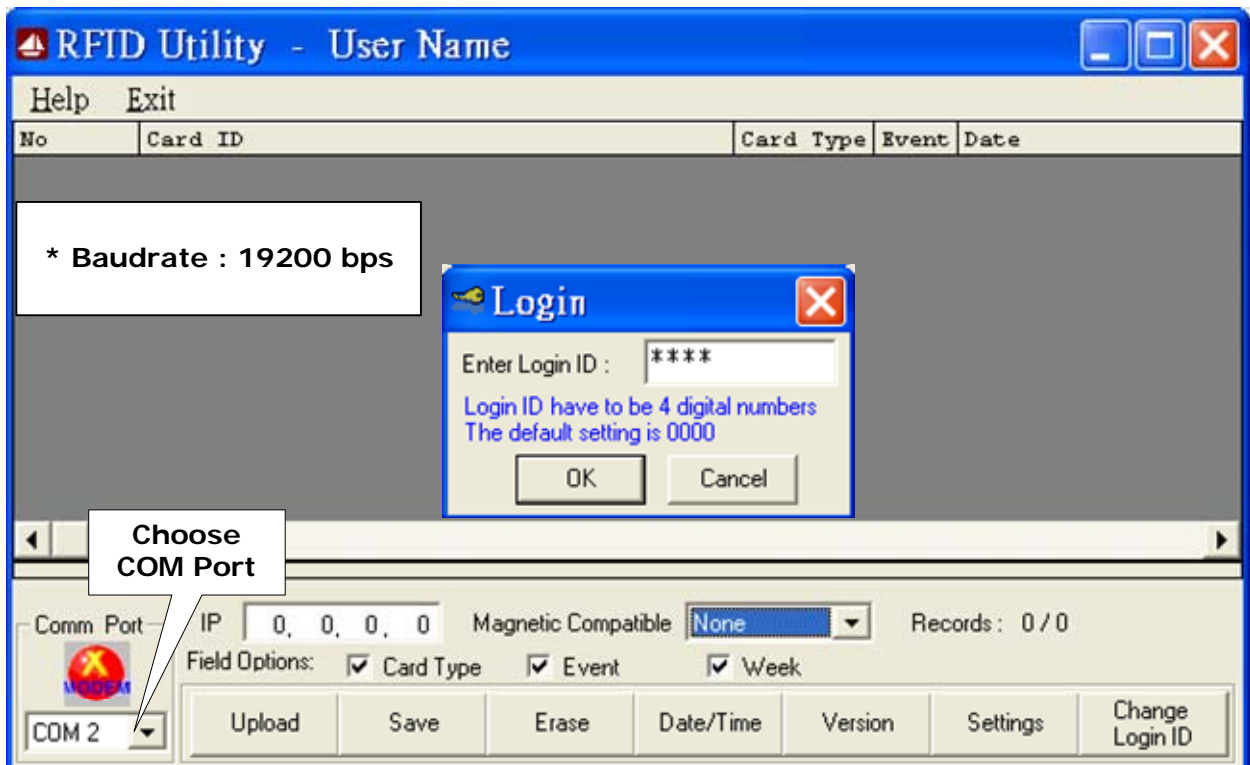


RFID Utility Demo Software

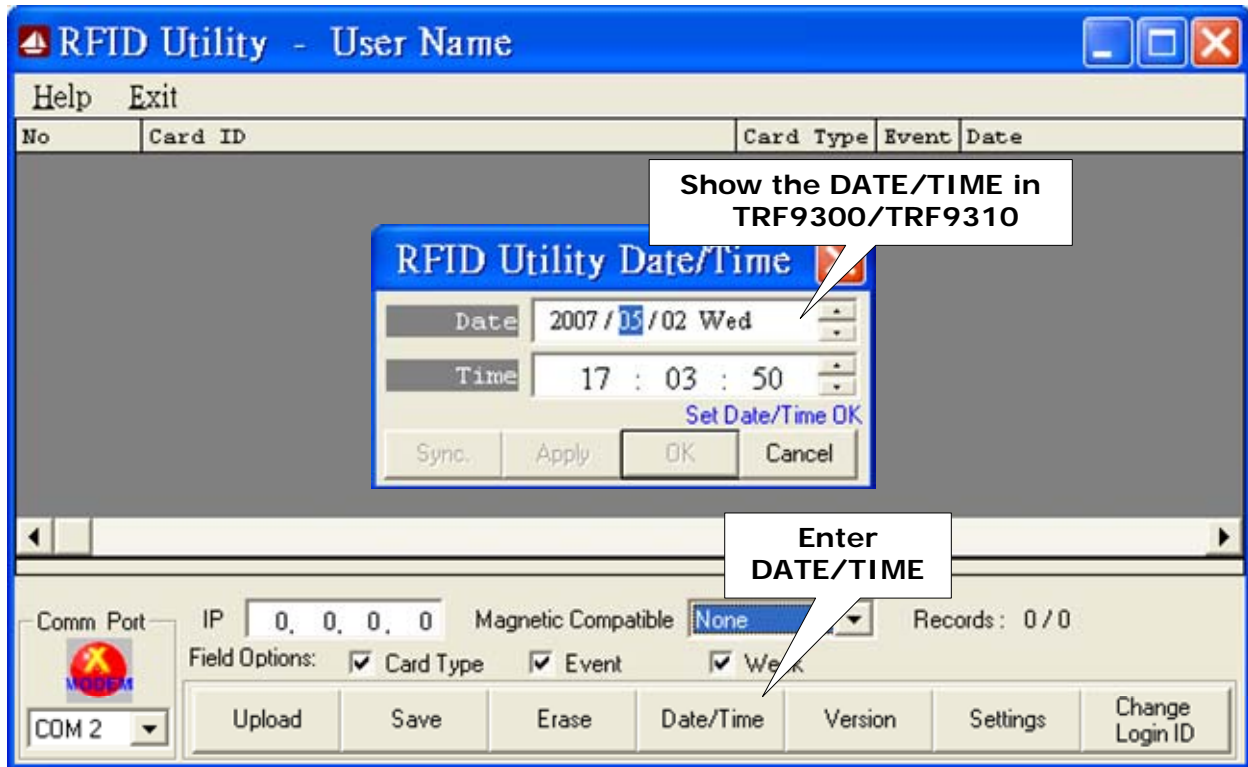
STEP 1 : Run RFID Utility Demo Software



STEP 2 : Choose COM Port (Do not choose TCP/IP)

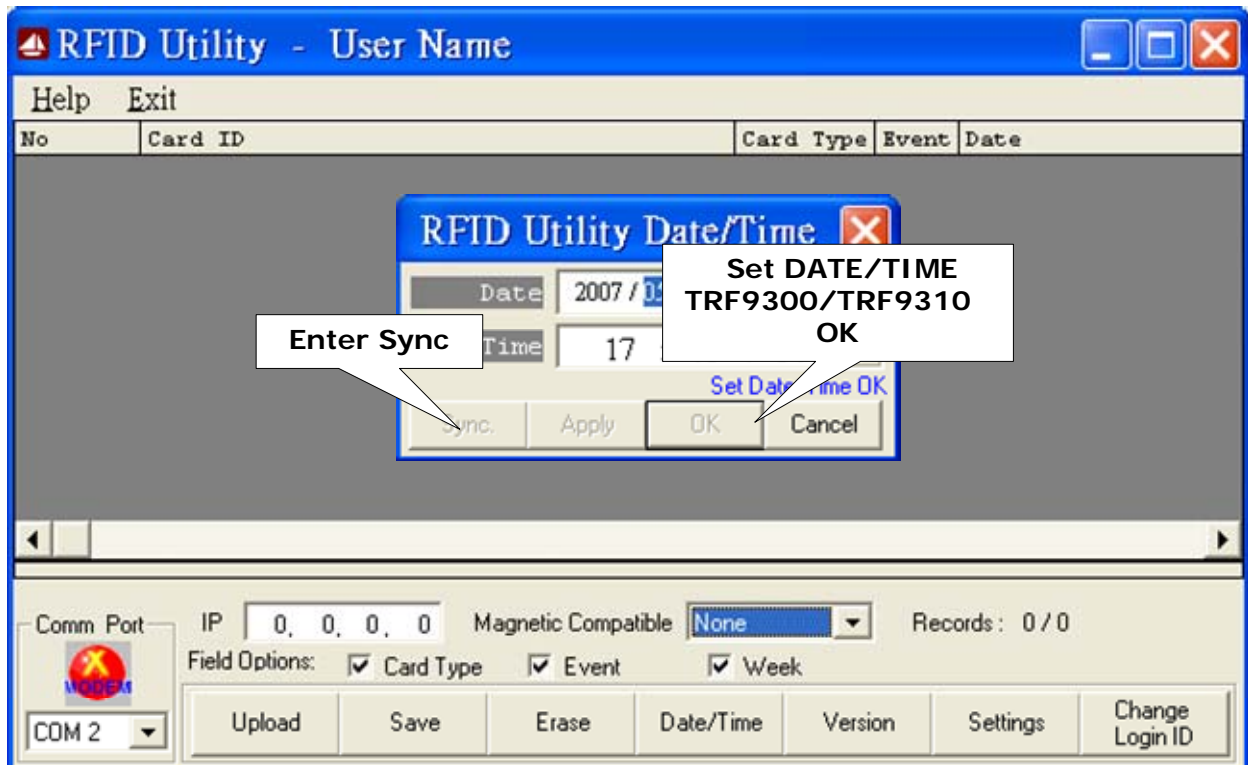


**STEP 3 :Enter DATE/TIME to get DATE/TIME
(To show the DATE/TIME in TRF9300/TRF9310 when needed)**

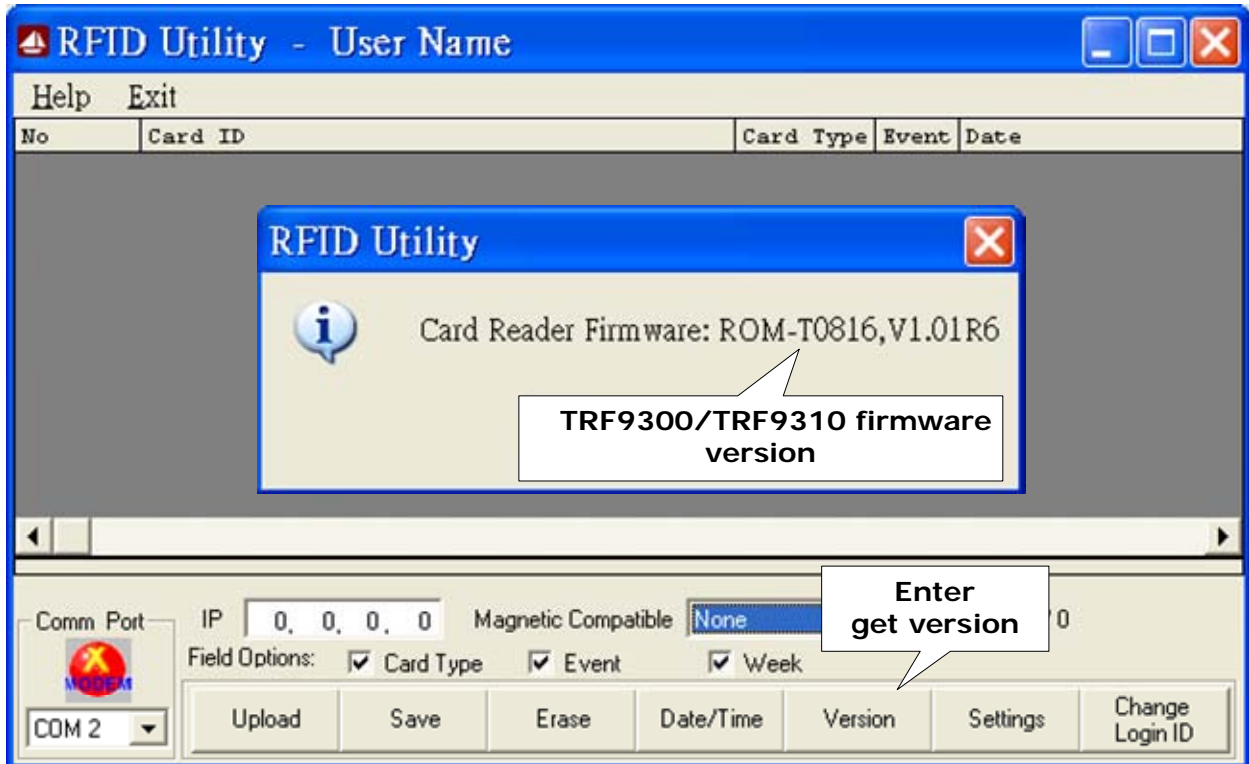


STEP 4 : Enter DATE/TIME to set DATE/TIME (when needed)

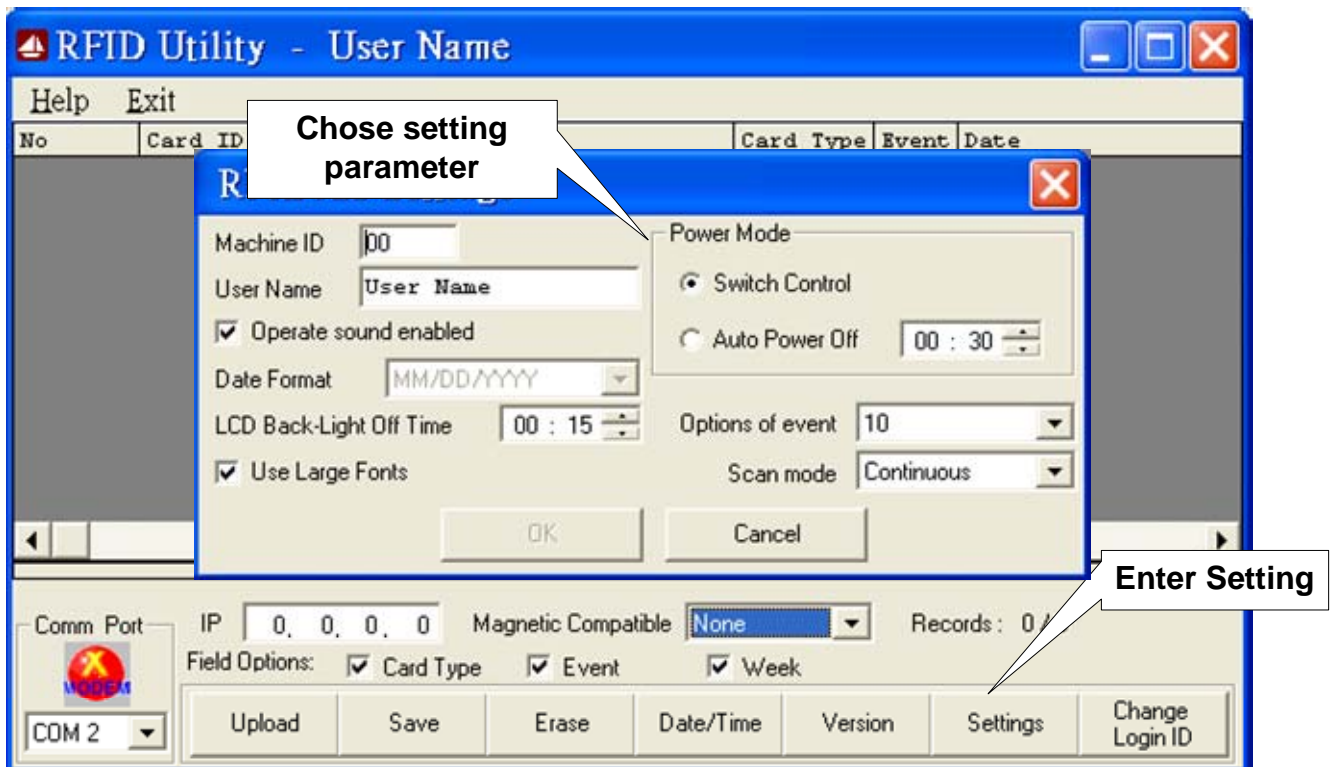
NOTE: Make sure your PC current time is correct before you set PC time to TRF9300/TRF9310.



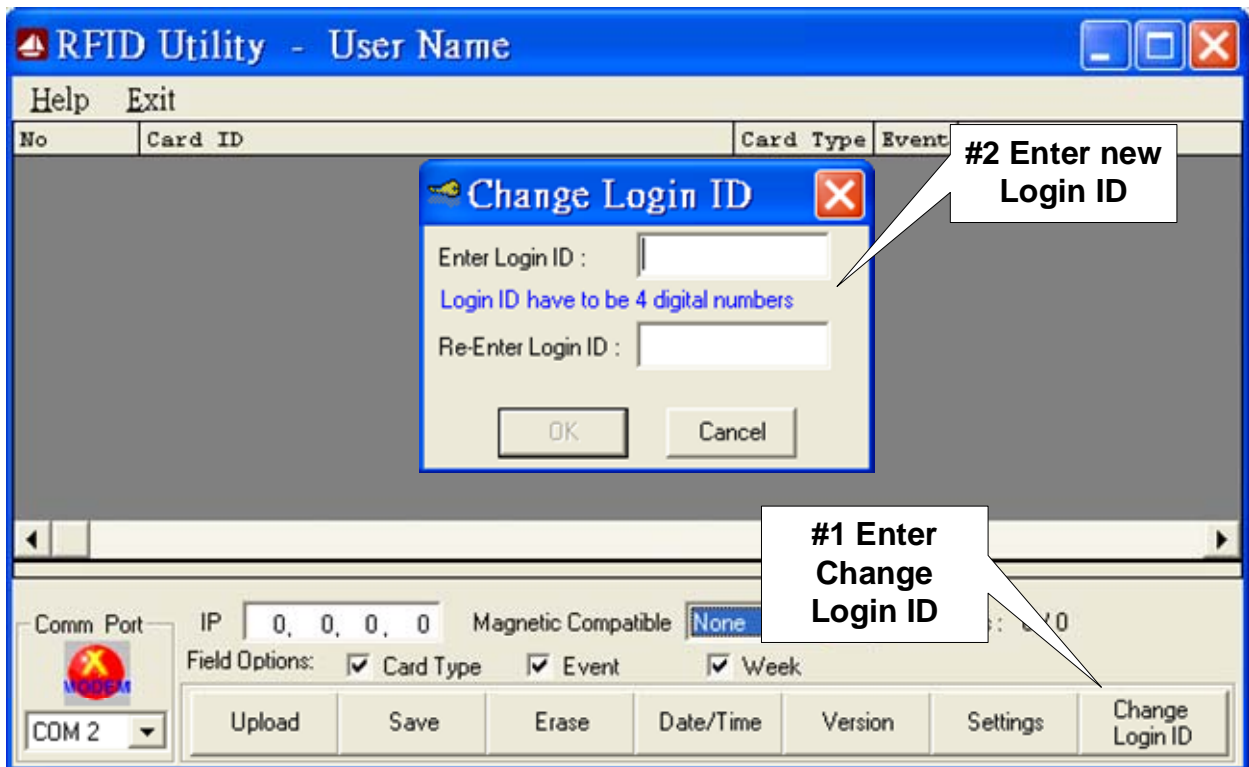
STEP 5 : Enter get version
 (To show TRF9300/TRF9310 firmware version when needed)



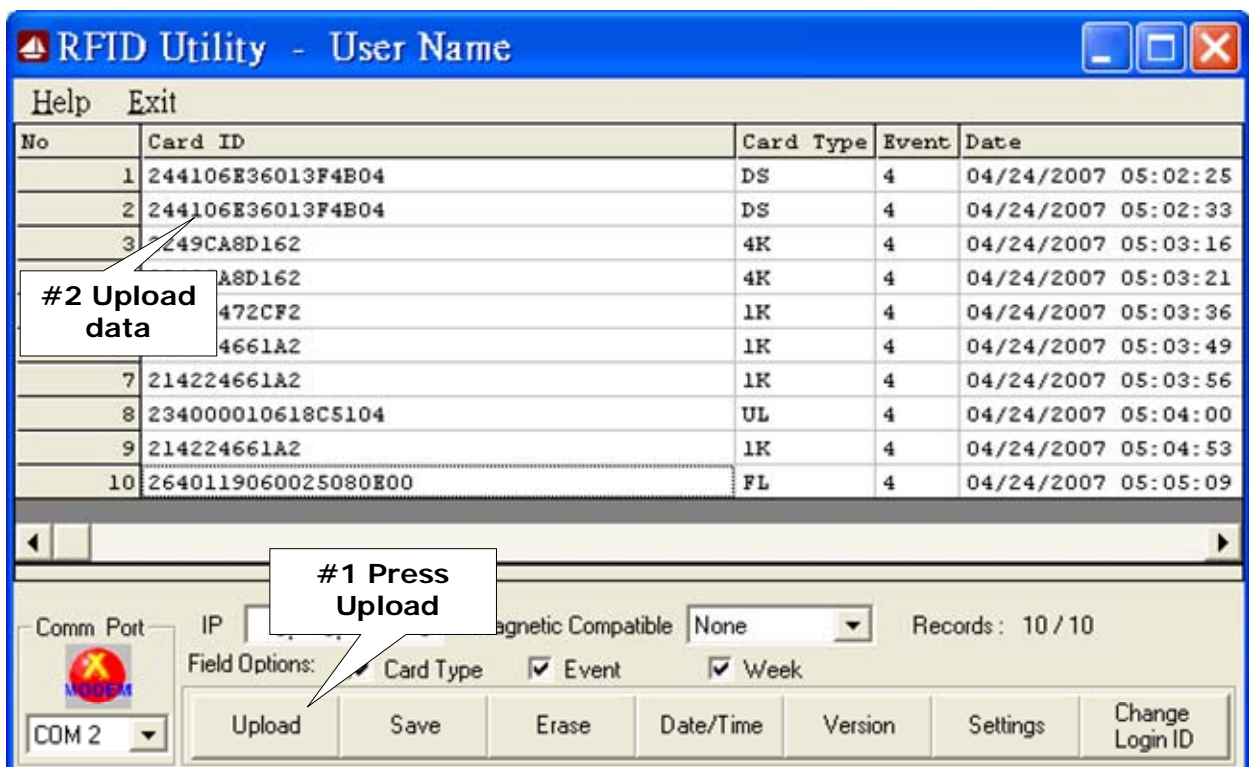
STEP 6 : Enter setting TRF9300/TRF9310 parameter.



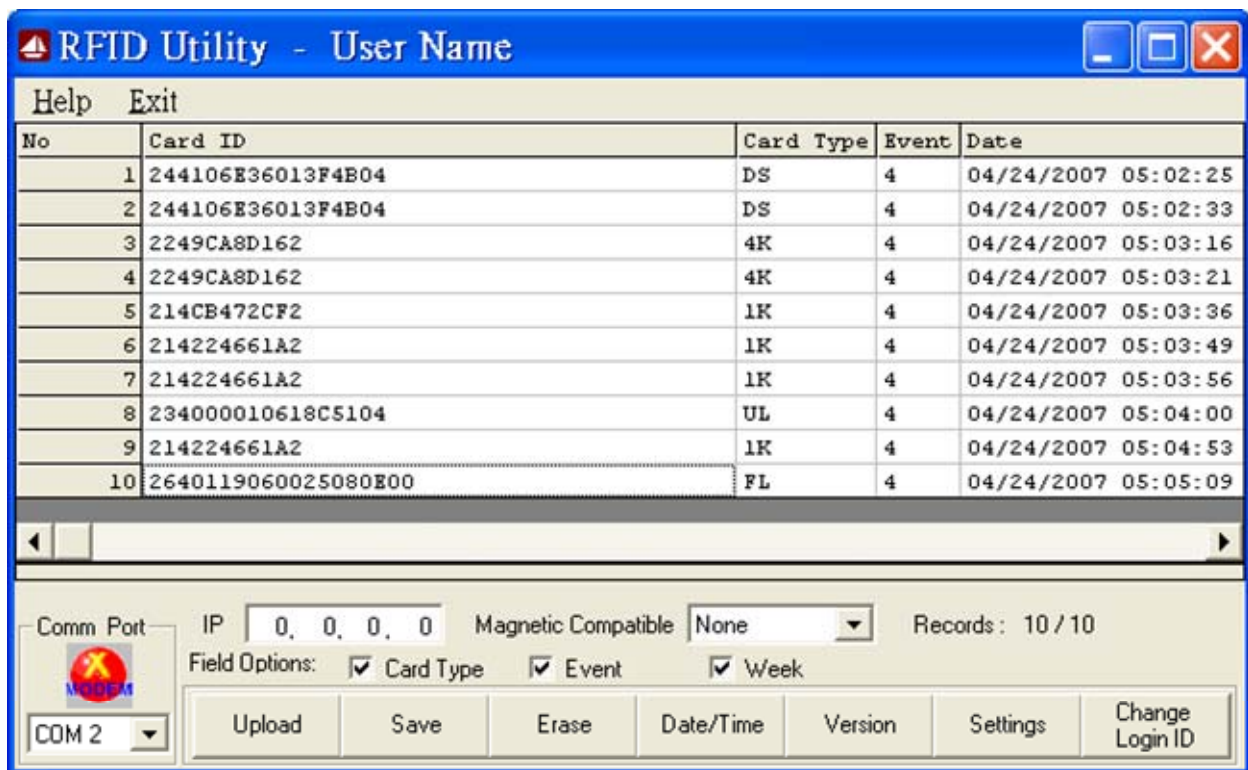
**STEP 7 : Enter Change Login ID to Change Login ID
(Login ID default setting is "0000".)**



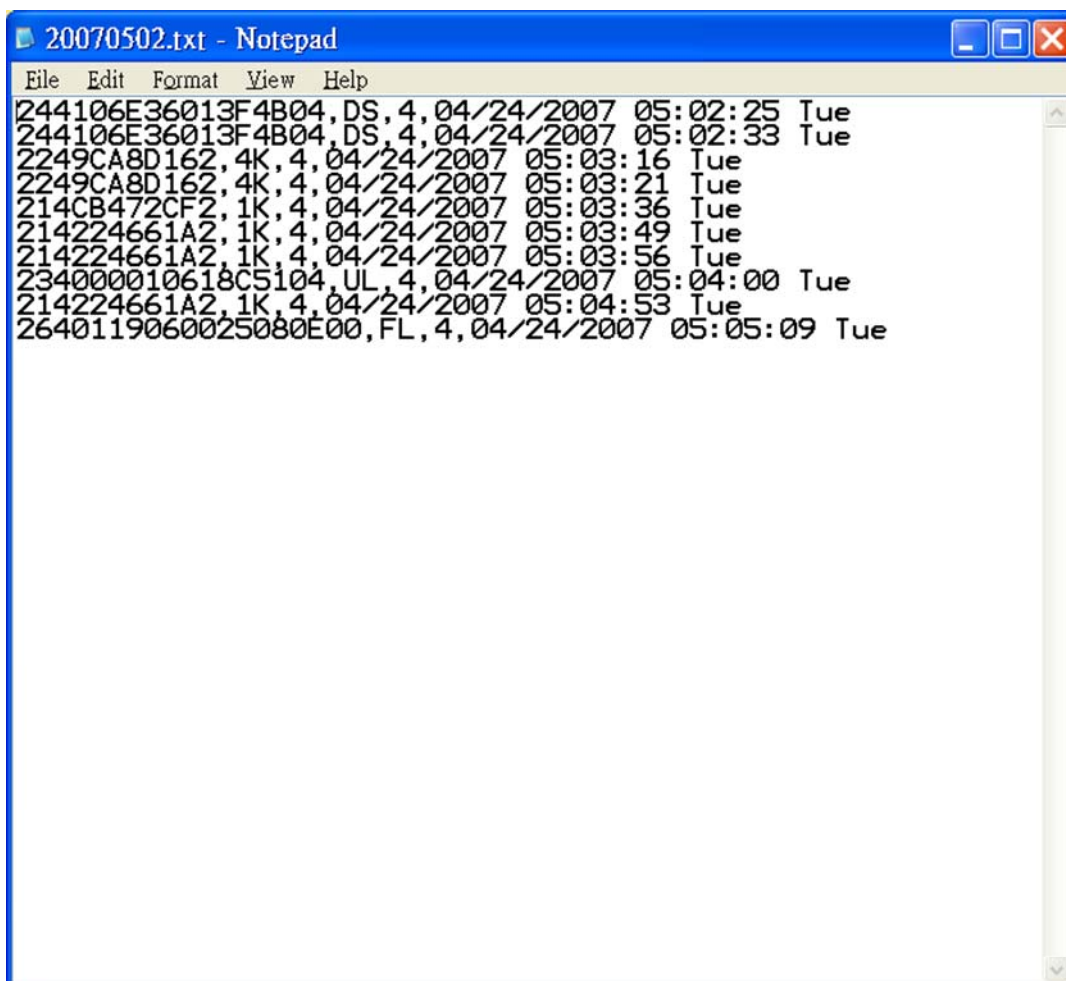
STEP 8 : Enter upload to upload data



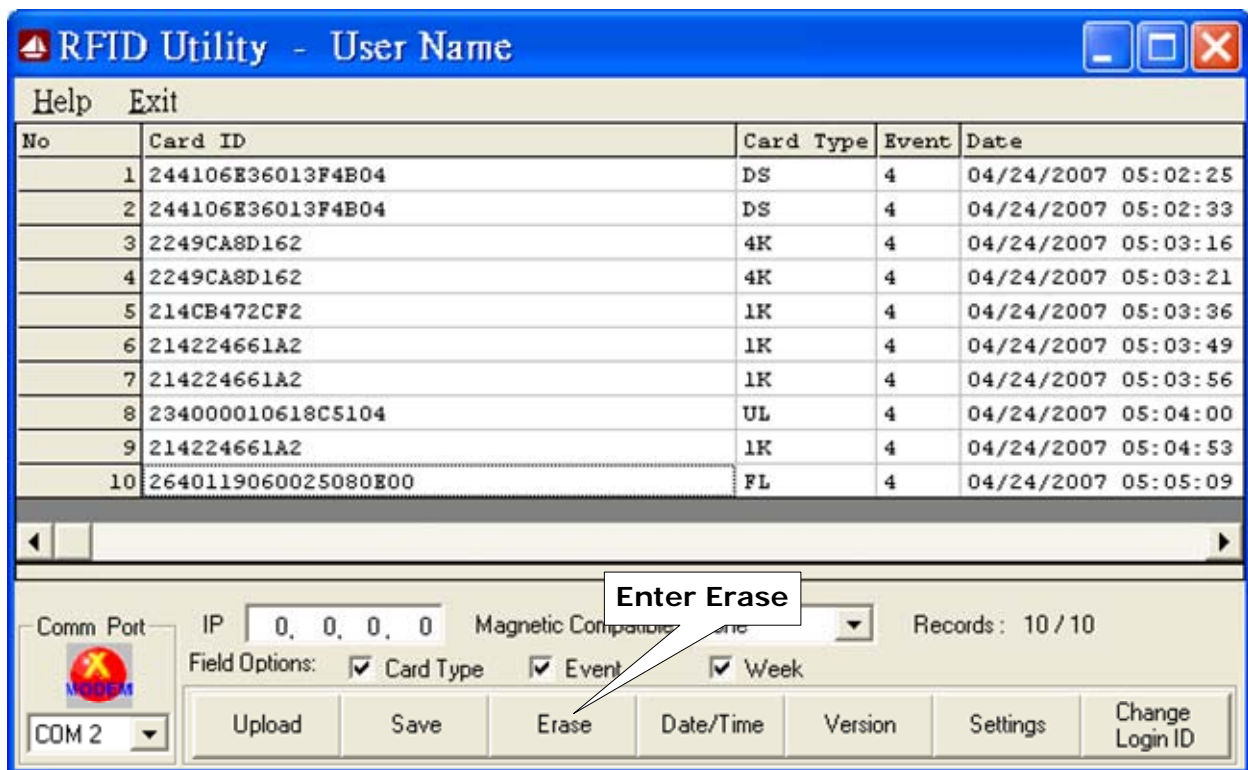
STEP 9 : Enter save to save data



Save data text file



STEP 10 : Enter Erase to erase the memory records of TRF9300/TRF9310
 (Note : Always [Save] the data before [Erase])



STEP 11 : Exit RFID Utility software

